



# 150W

INDUCTION MOTOR

□ 90mm TERMINAL BOX TYPE

## INDUCTION MOTOR - CONTINUOUS RATING

SIZE mm sq.	Type	Poles	Output (W)	Voltage (V)	Frequency (Hz)	Duty	Rated Load				Starting (kg-cm)	Torque (N-m)	Capacitor (uF)
							Current (A)	Speed (rpm)	Torque (kg-cm) (N-m)				
90	S9I150GU-T S9I150GU-T1 S9I150GU-TCE S9I150GU-T1CE	4	150	3 ∅ 200	50	Cont.	1.0	1250	11.70	1.170	18.0	1.800	—
					60		0.9	1500	9.70	0.970	15.0	1.500	
					50		1.0	1300	11.30	1.130	22.0	2.200	
					60		0.9	1550	9.40	0.940	19.0	1.900	
	S9I150GS-T S9I150GS-T1 S9I150GS-TCE S9I150GS-T1CE	4	150	3 ∅ 220	50	Cont.	0.46	1250	11.70	1.170	18.00	1.800	—
					60		0.42	1500	9.70	0.970	15.00	1.500	
					50		0.49	1250	11.70	1.170	19.00	1.900	
					60		0.43	1500	9.70	0.970	16.00	1.900	
	S9I150GS-T S9I150GS-T1 S9I150GS-TCE S9I150GS-T1CE	4	150	3 ∅ 380	50	Cont.	0.46	1250	11.70	1.170	18.00	1.800	—
					60		0.42	1500	9.70	0.970	15.00	1.500	
					50		0.49	1250	11.70	1.170	19.00	1.900	
					60		0.43	1500	9.70	0.970	16.00	1.900	
S9I150GS-T S9I150GS-T1 S9I150GS-TCE S9I150GS-T1CE	4	150	3 ∅ 400	50	Cont.	0.46	1250	11.70	1.170	18.00	1.800	—	
				60		0.42	1500	9.70	0.970	15.00	1.500		
				50		0.49	1250	11.70	1.170	19.00	1.900		
				60		0.43	1500	9.70	0.970	16.00	1.900		

- ❖ Above model is a TP embedded and thermally protected type.
- ❖ CE marked at the end of the model name indicates that it is thermally protected type which has received CE with built-in TP.
- ❖ Only "H" type is applicable.
- ❖ For a three-phase 380V~440V motor, be cautious when using the inverter. When inverter is used, the insulation of winding becomes hot and may cause damage to motor.

## 50Hz

MODEL	GEAR RATIO	3	3.6	5	6	7.5	9	10	12.5	15	18	20	25	30	36	40	50	60	75	90	100	120	150	180	200
		rpm	500	416	300	250	200	166	150	120	100	83	75	60	50	41	37	30	25	20	16	15	12	10	8
S9KH□B	kg-cm	23.1	27.7	38.5	46.2	57.7	69.3	77.0	86.6	104	125	139	156	187	224	249	300	300	300	300	300	300	300	300	300
	N·m	2.26	2.72	3.77	4.53	5.66	6.79	7.55	8.49	10.24	12.29	13.65	15.36	18.34	21.97	24.42	29.42	29.42	29.42	29.42	29.42	29.42	29.42	29.42	29.42

## 60Hz

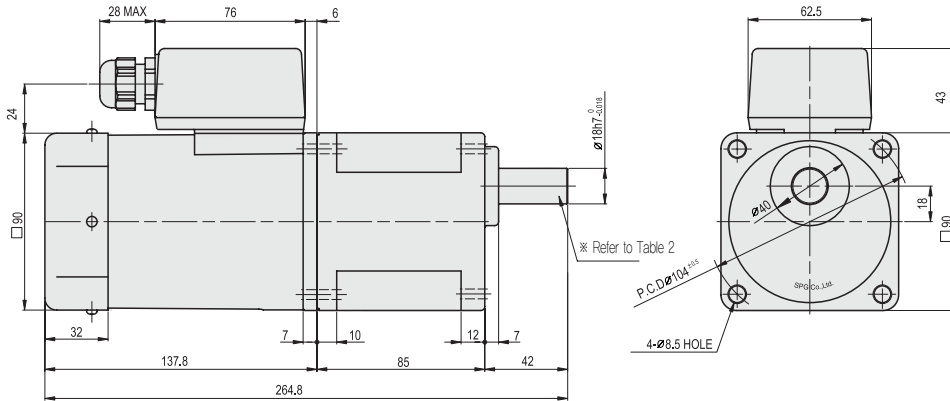
MODEL	GEAR RATIO	3	3.6	5	6	7.5	9	10	12.5	15	18	20	25	30	36	40	50	60	75	90	100	120	150	180	200
		rpm	600	500	360	300	240	200	180	144	120	100	90	72	60	50	45	36	30	24	20	18	15	12	10
S9KH□B	kg-cm	23.2	27.8	38.7	46.4	58.0	69.6	77.4	87.0	104	125	139	156	188	225	250	300	300	300	300	300	300	300	300	300
	N·m	2.28	2.73	3.79	4.55	5.69	6.83	7.59	8.53	10.24	12.29	13.65	15.36	18.43	22.06	24.52	29.42	29.42	29.42	29.42	29.42	29.42	29.42	29.42	29.42

- ❖ The code in □ of gearhead model is for gear ratio.
- ❖ It is the permissible torque (in small letters to be consistent with others) of the assembled motor and gearhead.
- ❖ The permissible torque of the motor and inter-decimal gearhead is 200 kg-cm.
- ❖ ■ color indicates that the output shaft of the geared motor rotates in the same direction as the output shaft of the motor. Others indicate rotation in the opposite direction.
- ❖ Rpm is based on synchronous speed (50Hz: 1500rpm, 60Hz: 1800rpm) divided by gear ratio. The actual rotation speed can be 2~20% less than displayed value depending on the load.
- ❖ For a three-phase 380V~440V motor, be cautious when using the inverter. When inverter is used, the insulation of winding becomes hot and may cause damage to motor.

# DIMENSIONS

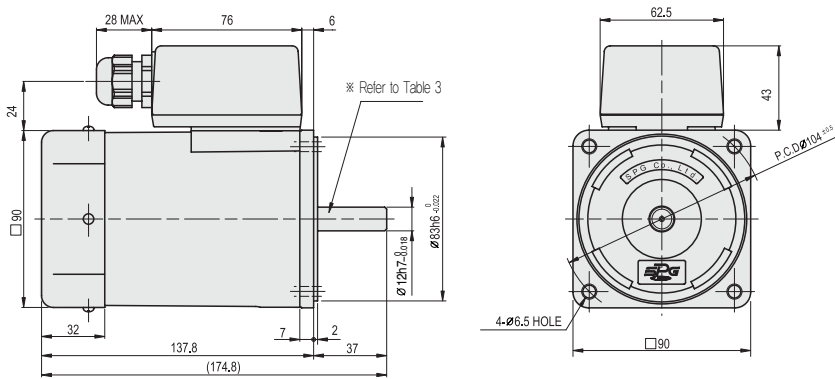
## + GEARED MOTOR

- ※ MOTOR MODEL : S9I150G□-T
- ※ HEAD MODEL : S9□H3B~S9□H200B



## + MOTOR

- ※ MOTOR MODEL : S9I150□□-T



## + WEIGHT - (Table1)

PART		WEIGHT(kg)
MOTOR		3,10
GEAR HEAD	S9□H3B ~S9□H10B	1,65
	S9□H12.5B ~S9□H20 B	1,80
	S9□H25B ~S9□H60B	1,90
	S9□H75B ~S9□H200B	1,95

## + KEY SPEC

GEAR HEAD	MOTOR

## + SPEC for output shaft of gearhead - (Table2)

MODEL	TYPES OF OUTPUT SHAFT
STRAIGHT TYPE	
S9SH3B ~S9SH200B	
D-CUT TYPE	
S9DH3B ~S9DH200B	
KEY TYPE	
S9KH3B ~S9KH200B	

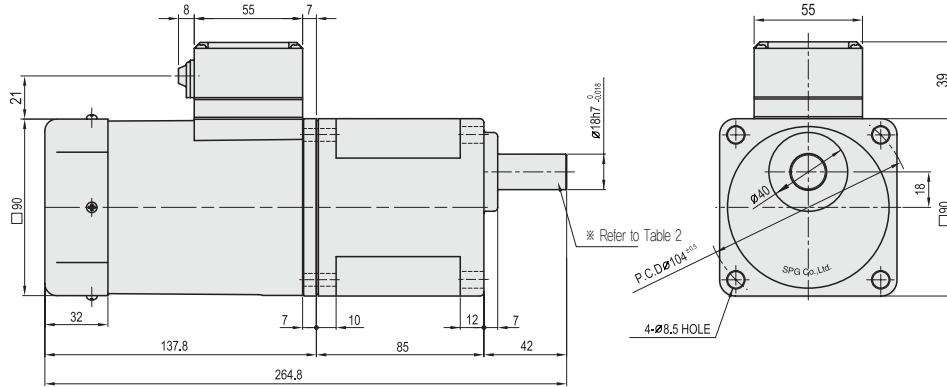
## + SPEC for output shaft of motor - (Table3)

MODEL	TYPES OF OUTPUT SHAFT
GEAR TYPE	
S9I150G□-T	
STRAIGHT TYPE	
S9I150S□-T	
D-CUT TYPE	
S9I150D□-T	
KEY TYPE	
S9I150K□-T	

# DIMENSIONS

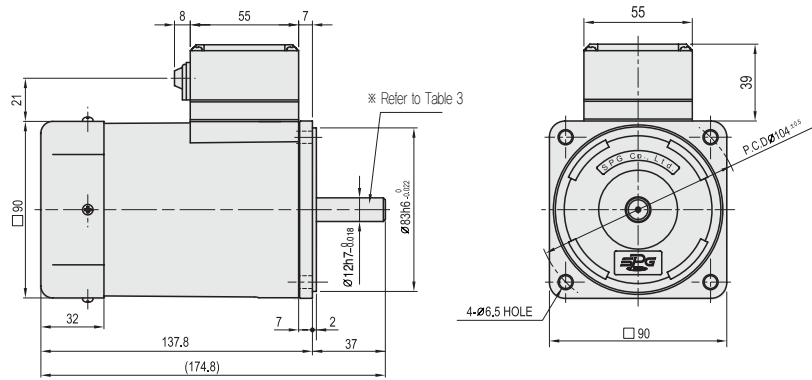
## + GEARED MOTOR

\* MOTOR MODEL : S9I150G□-T1  
 \* HEAD MODEL : S9□H3B~S9□H200B



## + MOTOR

\* MOTOR MODEL : S9I150□□-T1



## + WEIGHT - (Table 1)

PART		WEIGHT(kg)
MOTOR		3.05
GEAR HEAD	S9□H3B ~S9□H10B	1.65
	S9□H12.5B ~S9□H20B	1.80
	S9□H25B ~S9□H60B	1.90
	S9□H75B ~S9□H200B	1.95

## + KEY SPEC

GEAR HEAD	MOTOR

## + SPEC for output shaft of gearhead - (Table 2)

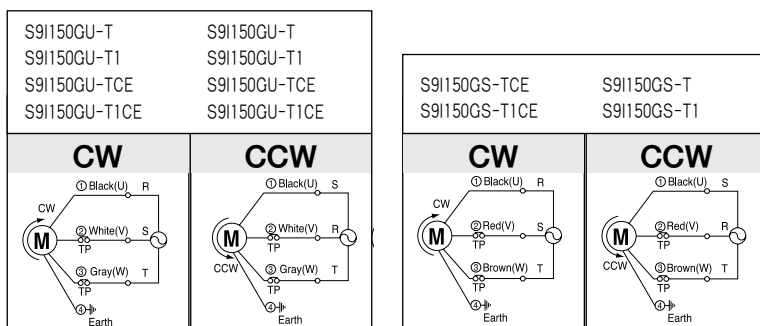
MODEL	TYPES OF OUTPUT SHAFT
STRAIGHT TYPE	
S9SH3B ~S9SH200B	
D-CUT TYPE	
S9DH3B ~S9DH200B	
KEY TYPE	
S9KH3B ~S9KH200B	

## + SPEC for output shaft of motor - (Table 3)

MODEL	TYPES OF OUTPUT SHAFT
GEAR TYPE	
S9I150G□-T1	
STRAIGHT TYPE	
S9I150S□-T1	
D-CUT TYPE	
S9I150D□-T1	
KEY TYPE	
S9I150K□-T1	

## SCHEMATIC DIAGRAMS

The direction of motor rotation is as viewed from the front shaft end of the motor. Circled number is the terminal number inside terminal box.



Change the direction of motor rotation only after the motor stops completely. If an attempt is made to change the direction of rotation while the motor is running, the motor may ignore the reversing command or change its direction of rotation after some delay.