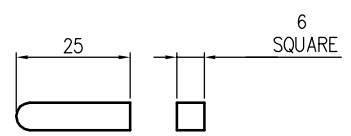
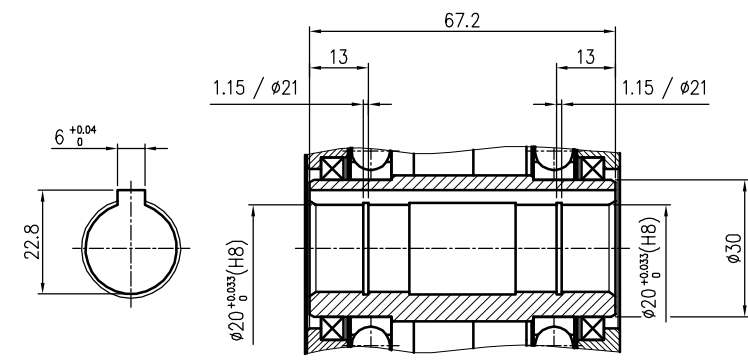


ISOMETRIC VIEW (S=N/S)



KEY(S=1/1)[SEPARATE PACKAGE]



OUTPUT SHAFT (S=1/1)

NOTE

1. GEAR RATIO : 1/30 (3 STAGE)
2. BEARING STRUCTURE : BALL BEARINGS
3. GEAR BOX LUBRICATION : GREASE
4. APPLY MOTOR : BLDC X-TOR SERIES (90 FRAME)
5. OUTPUT SHAFT END PLAY : 0.5mm MAX.
6. CUSTOMER IS RESPONSIBLE FOR DETERMINING THAT MOTOR PERFORMANCE IS SUITABLE IN THE APPLICATION
7. UNIT : mm

DATE		SIGN		REVISION		REVISION	
MATERIAL		SURFACE FINISH		SCALE		TOLERANCE	
D.H KIM		D.H KIM		2015.12.08		A-001-9043-10	

BLDC GEAR HEAD ASS'Y
XTG930H-F

SPG Co., Ltd. DATE: 2015.12.08 DWG NO. A-001-9043-10

THIS DOCUMENT IS SOLELY THE PROPERTY OF SPG CO., LTD. REPRODUCTION, USE DISCLOSURE, OR TRANSMISSION OF THIS DOCUMENT OR DETAILS CONTAINED HEREIN, IN PART OR IN WHOLE, IS PROHIBITED WITHOUT THE WRITTEN CONSENT OF SPG CO., LTD ENGINEERING. THIS DOCUMENT AND ANY COPIES SHALL BE RETURNED TO SPG CO., LTD UPON WRITTEN REQUEST.